

erluna

beautifully lit

welcome to orluna

We believe, only those things that are well lit truly shine.

Light can enhance beauty, dramatise detail, evoke emotion, and turn empty spaces into living, breathing places.

That's why we don't just sell beautiful fittings – we offer a beautiful lit effect.

Where others are functional, we are warm and inviting. Because we believe the designers of the world's most stunning homes, hotels and galleries deserve their work to be seen in the best light, with the world's best lit effect.

Orluna, beautifully lit.



welcome

why orluna?

The right lighting can transform a room and the mood of those within it. Our passion lies in bringing our customers the very best lighting products, innovations and expertise, to help them build environments to welcome, to inspire or simply to relax in.

Yes our fittings are beautiful – but more than that is the role great design and lighting can play in breathing life into a room, and creating places people want to spend time in.

Unlike other lighting companies, we go beyond fittings design to make sure the light delivered is just as flawless, achieving the best lit effect.

highest colour
quality as
standard

R9 99, enhancing entire
colour wheel

unrivalled
beam angle
choice

x10 angles, first to market
wall wash

market
leading
longevity

Bespoke heatsink,
L70 = 460k hours
L90 = 50k hours

Centre Point

Sector: Residential

Year: 2019

Lighting Designer: Conran and Partners

Photographer: Henry Woide

Location: London

Product: Origin Nikko

Built in 1966, Centre Point was designed by the architect Colonel Richard Seifert and captured the adventurous spirit of 60s London. Whilst this and many of Seifert's other projects courted controversy at the time, they have since come to be recognised as design classics. Rick Mather Architects, Conran and Partners and Morpheus London recently teamed up to build on Seifert's legacy, writing a new chapter in Centre Point's history by transforming it into luxury apartments – complemented by our Origin Nikko lights, which help to reveal the new designs, features and materials as they were meant to be seen.

Origin Nikko lighting features throughout the apartments, including the penthouse, which has views stretching across London.

A welcome contrast to the grey brutalist building, Origin Nikko brings a warmth and lightness to the residents' living spaces. It is one of many examples of how Orluna is both a leading light and market leader when it comes to furnishing London's luxury homes and five-star hotels with lighting of unparalleled quality.



Centre Point



Stella McCartney Florence

Sector: Retail

Year: 2017

Lighting Designer: PJC

Location: Florence, Italy

Product: Origin One

The interior designer's vision was to highlight Stella McCartney's signature pared back colour palette and vibrant on-trend fashion pieces. Origin One helped achieve this by exquisitely accenting the retail space and, of course, the garments within it.

The exceptional red rendering faithfully brought out the colour and quality of the fabrics and craftsmanship of the Stella McCartney design team. Furthermore, it created a warm and luxurious atmospheric feel, even bringing out customers' skin-tones to make them look great and feel good.

Origin One created a space
for Florence's fashionistas
and Stella McCartney's
clothes to truly shine.

Other retail spaces beautifully enhanced by Origin One include projects for John Frieda, Harvey Nichols, Selfridges, Fortnum & Mason, Harrods, BMW, Chrome Hearts, Estée Lauder, Karl Lagerfeld, Gant and Next Group.

Stella McCartney

Residential W6

Sector: Residential

Year: 2019

Lighting Designer: Zoe Duff Gordon Lighting

Photographer: Peter Landers

Location: London

Product: Fade Origin

Located in West London, this charming Victorian residential property has recently undergone a stunning renovation to bring it into the 21st Century. Sonsino Turcan project-managed the improvements, working closely with Susan Walker Architects and Zoe Duff Gordon Lighting to bring the sublime elements together.

Zoe was responsible for the lighting design throughout the property. Spanning over four floors, she brilliantly complemented the abundant natural light with our downlights to create a warm and inviting, yet modern look.

Areas that natural light doesn't reach are beautifully lit with our Fade Origins.



— origin

When you've created a stunning space, you want to faithfully deliver every shade within it. That's why our Origin family of downlights, uplights, spots and linear lights all use a bespoke phosphor LED, which gives incredibly high colour rendering overall, and the best red rendering in the world. Origin is also the only core downlight with ten precise beam angles, so it's adaptable to every setting, giving more control, and letting you add more drama to every moment.

designed for richer reds

Typically, LED lighting doesn't render reds well. An average downlight offers a red R9 rating of between 7 and 55. The Origin range, however, offers an R9 of 99 out of 100. This means that the Origin has a near-perfect red rendering. And because reds are extremely important in the representation of a wide range of colours, Fixed Origin will help make your scheme as beautiful as intended.

lit effect

- ✓ narrow beam
- ✓ soft beam
- ✓ crisp beam
- ✓ elliptical
- wall wash

one | adjustable
origin

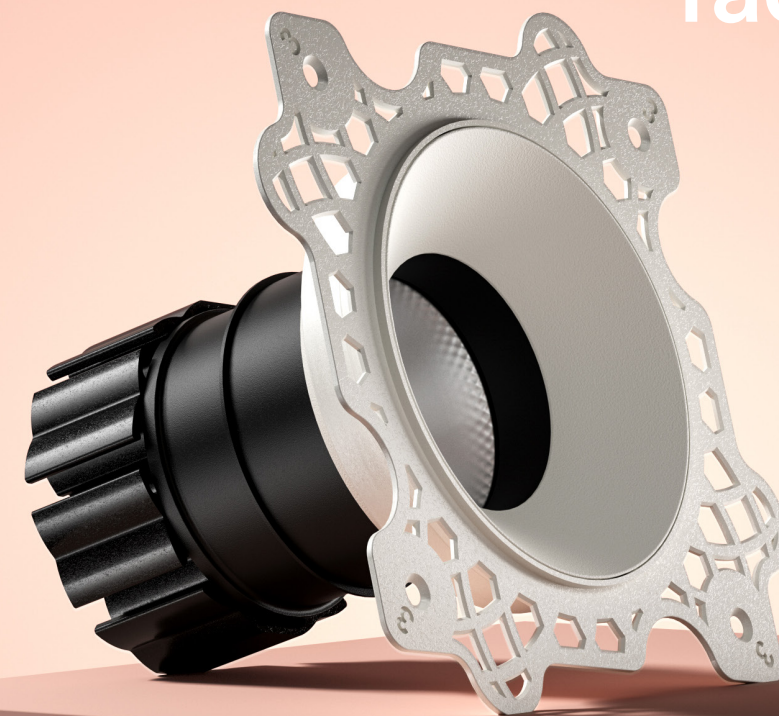


Versatile core downlight that tilts within ceiling. Ideal for general downlighting.

lit effect

- ✓ narrow beam
- ✓ soft beam
- ✓ crisp beam
- ✓ elliptical
- wall wash

fade | fixed
origin

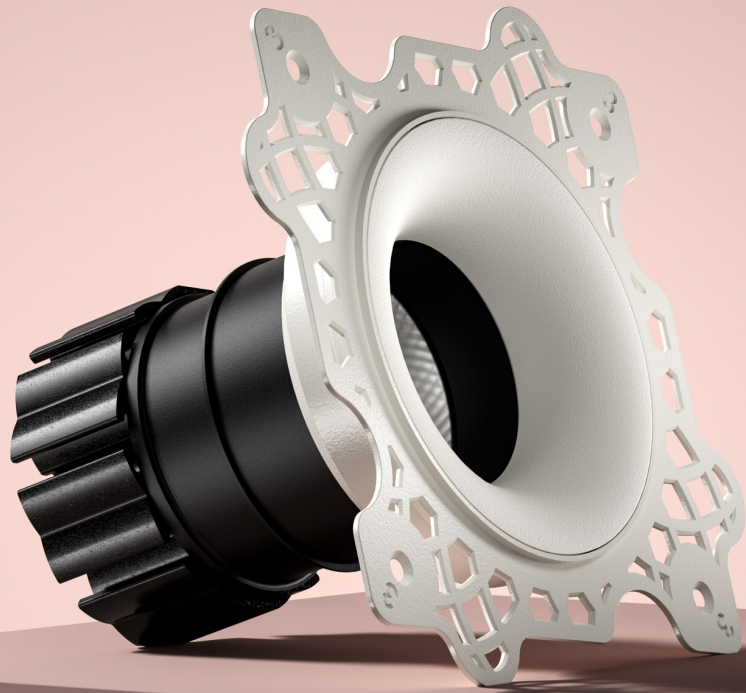


Gentle recess, embedded into the ceiling. Set back for softer glare.

lit effect

- ✓ narrow beam
- ✓ soft beam
- ✓ crisp beam
- ✓ elliptical
- wall wash

camber | fixed origin

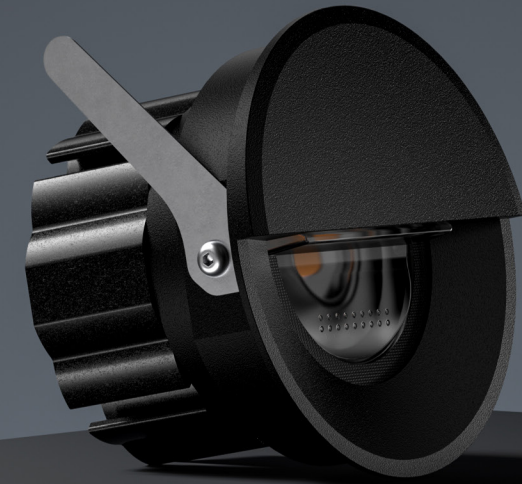


Trimless, curved Orluna classic. Can be matched with Curve.

lit effect

- narrow beam
- soft beam
- crisp beam
- elliptical
- ✓ wall wash

muro | black



Exceptionally straight-edged wall wash. Useful in pairs.

lit effect

- ✓ narrow beam
- ✓ soft beam
- ✓ crisp beam
- ✓ elliptical
- wall wash

curve | adjustable origin



Subtle, curved Orluna classic. Good for soft flood beams.

lit effect

- narrow beam
- ✓ soft beam
- crisp beam
- elliptical
- wall wash

roc 100 | fixed



Small uplight with no baffle for low voids. Great for accent lighting.

international sales map

international
partners

USA

Europe

Middle East

Asia Pacific

Poznan
Poland

Tel-Aviv
Israel

Christchurch
New Zealand

Rotterdam
Holland

Istanbul
Turkey

Sydney
Australia

Stockholm
Sweden

Amman
Jordan

Johannesburg
South Africa

Paris
France

Beirut
Lebanon

Jakarta
Indonesia

Madrid
Spain

Muscat
Oman

Bangkok
Thailand

Berlin
Germany

Dubai
UAE

Hong Kong
Hong Kong

Dublin
Ireland

Obour City
Egypt

New Delhi
India

Florence
Italy

orlduna sales

New York
USA

Klagenfurt
Austria

Dubai
UAE

Singapore
Singapore

London
United Kingdom

Please contact your local partner directly,
or for more information visit **orlduna.com**

100% recyclable

please affix business card here